



FLEVOLAND

A full-page photograph serves as the background. It shows a young man in a white hoodie and dark jeans performing a skateboard trick on a concrete ledge. He is in mid-air, with his arms outstretched. In the background, there are two prominent modern buildings: a tall, grey, rectangular one on the left and a more complex, multi-story one with many windows on the right. The sky is clear and blue.

FLEVOLAND OBVIOUSLY DIFFERENT

ONLY 20 MINUTES FROM AMSTERDAM ≈ THE PERFECT DESTINATION FOR
AN EASY DAY TRIP OR A SHORT BREAK ≈ FOUR METRES BELOW SEA LEVEL

FLEVOLAND OBVIOUSLY DIFFERENT





Quite an accomplishment, building an entire province from scratch. Still, that's exactly how Flevoland came into being: manmade land, a good four metres below sea level and secured by miles of dykes. But then Flevoland is never really finished. Probably something to do with that twentieth-century soil under our feet we reckon; it seems to exert an effect on people. Nowhere else offers more space for innovative ideas than right here. As all Flevoland's are well aware: the sky is the limit.

JUST DO IT

Taken together, Flevoland's three polders form the largest piece of manmade land on the planet. The islands which already existed in the Zuiderzee (Schokland and Urk) were marooned in the new land when the sea was drained. Things happen here like nowhere else. How about an open air three kilometres long artificial ice-skating track? Need a wind break... we simply put up wind turbines. And if a dyke needs to be rebuilt, we go for it in an entirely new way.





DESIGNED LAND, WILD LAND

Everything you see was created on the drawing board. The orderly parcels of agricultural land. The straight roads. The canals. And of course: the spaces dedicated to nature. These designated areas of natural beauty have continued to develop to become fascinating wild polder landscapes. A good example is the extensive wetland area in the Nieuw Land National Park, another is the Netherlands' largest continuous deciduous woods. We are currently creating the Marker Wadden group of artificial islands in the wide waters that surround Flevoland in a bid to attract more fish and birds to the Markermeer lake. Nature is already reclaiming its own, as of course it certainly should.





When the tulip and rapeseed fields bloom, Flevoland is transformed into a riot of intensely colourful hues. Our local food is appreciated across the globe. And between the fields, this is where the people realise their ideals. For example by creating amazing and sometimes even edible estates, yes... you read that right! Everything we want we create ourselves. That's how we do things in Flevoland.

GREEN IDEALS

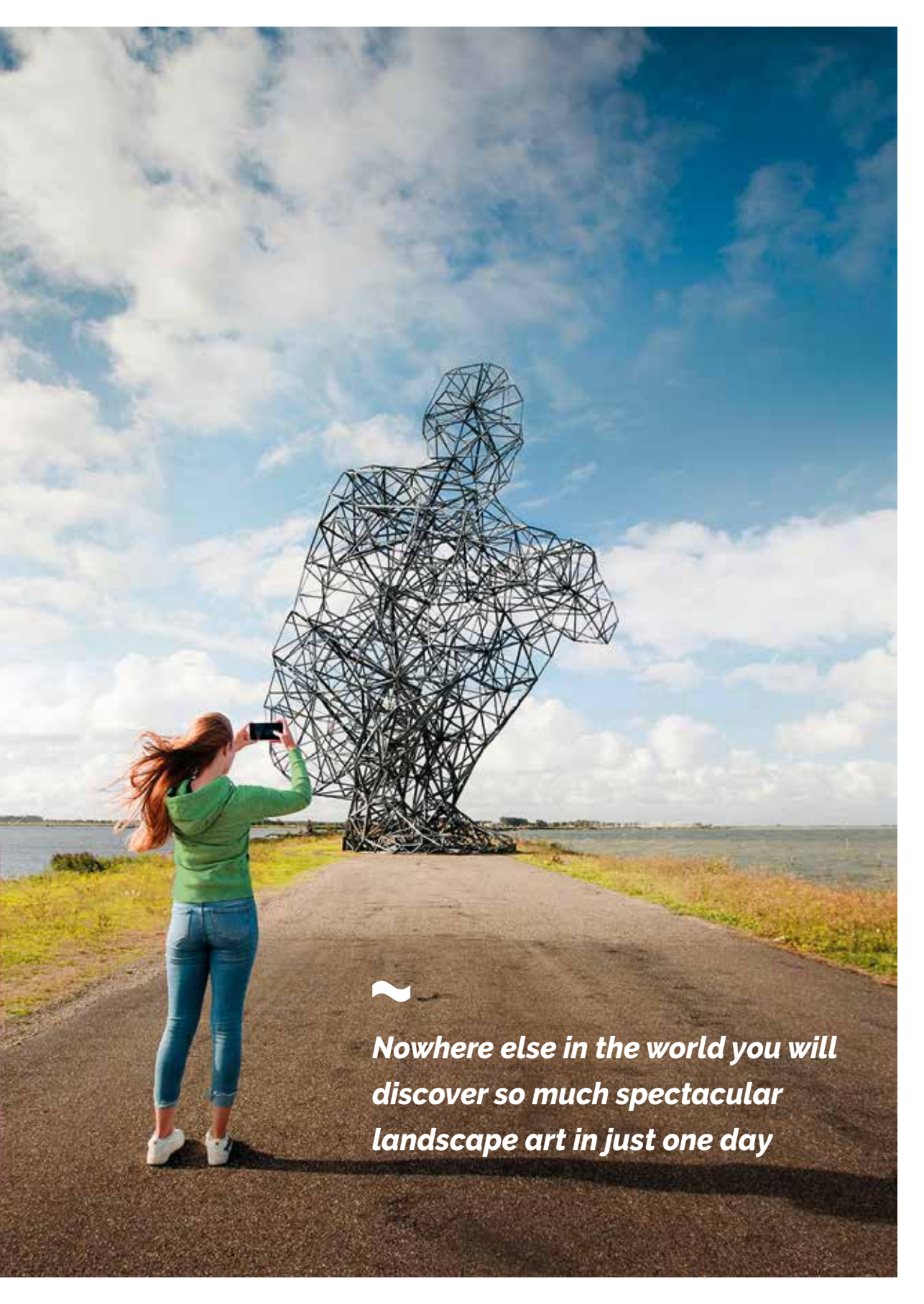


100% NOW

No other landscape in the Netherlands breathes '20th century' as much as Flevoland does. The modern polder cities are in part architectural museums, featuring the work of such world renowned architects as Rem Koolhaas. There is also space for experimental designers to practise their craft. And nowhere else in the world will you discover so much spectacular landscape art in just one day. The province is continuously renewing. The ports and airports are state-of-the-art and maintained that way, the next Floriade international exhibition and garden festival to be held in 2022 is already under construction and plenty of opportunities exist for the self builders to realize their own dream houses. Here you even have the space to get together and construct your own neighbourhood.

FLEVOLAND INCOMPARABLE LAND

Flevoland, on the former Zuiderzee seabed, is like nothing else that exists; anywhere! Flevoland is obviously different. Something you will immediately recognise when you drive into the province. The crisp clear lines, the space, that modern twist; you can only be in Flevoland.



*Nowhere else in the world you will
discover so much spectacular
landscape art in just one day*

HOW IT ALL BEGAN...

Flevoland's history is **unique**. Where else can you find a region that 100 years ago was still entirely submerged, the former Zuiderzee. The world's largest land reclamation project.





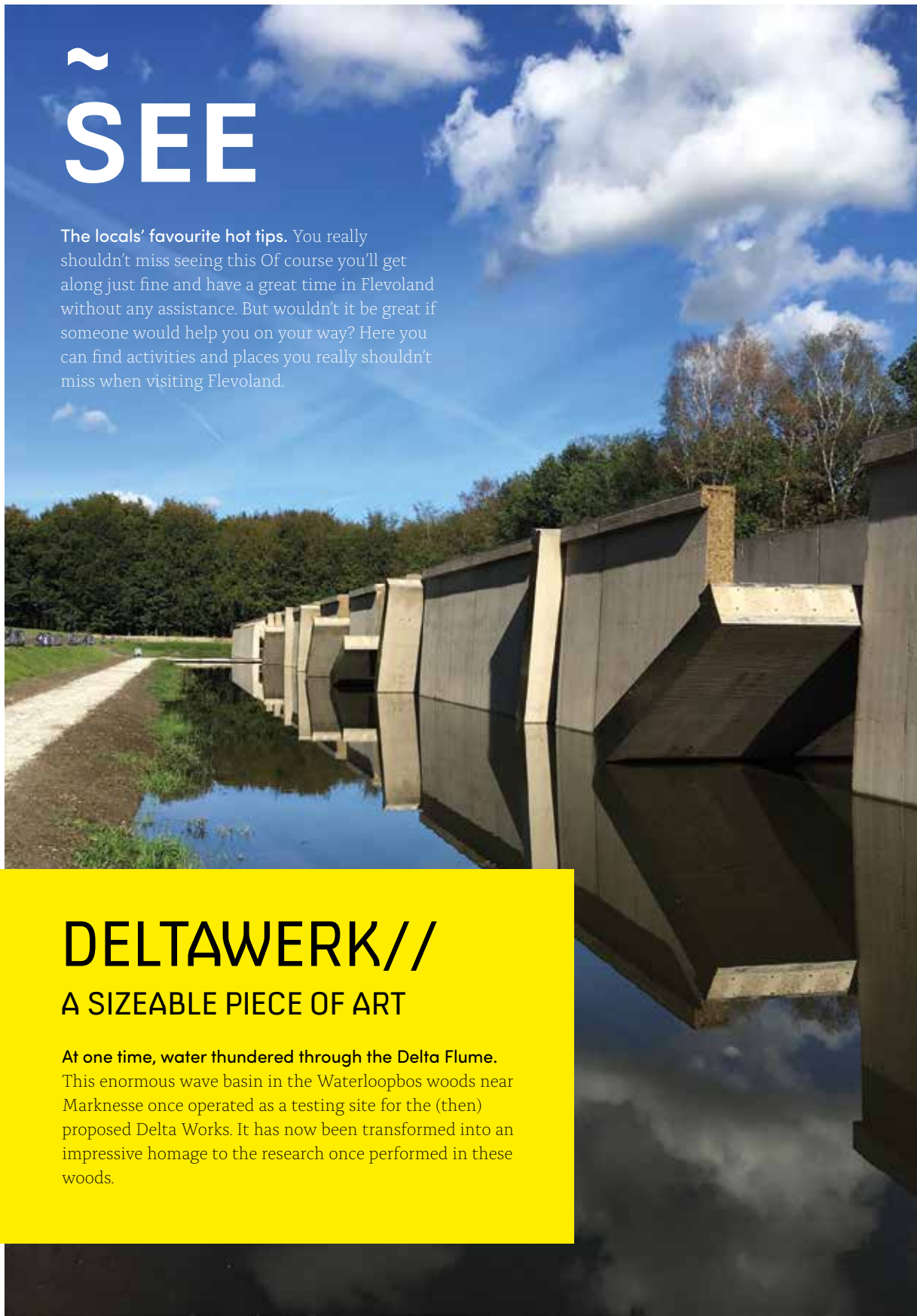
An overview of all events in Flevoland is available at [visitflevoland.nl](https://www.visitflevoland.nl)

~ SEE

The locals' favourite hot tips. You really shouldn't miss seeing this. Of course you'll get along just fine and have a great time in Flevoland without any assistance. But wouldn't it be great if someone would help you on your way? Here you can find activities and places you really shouldn't miss when visiting Flevoland.

DELTAWERK// A SIZEABLE PIECE OF ART

At one time, water thundered through the Delta Flume. This enormous wave basin in the Waterloopbos woods near Marknesse once operated as a testing site for the (then) proposed Delta Works. It has now been transformed into an impressive homage to the research once performed in these woods.



COME AND VISIT THE NETHERLANDS' NEWEST UNINHABITED ISLAND



With its natural harbour, bird hides and beach, the first Marker Wadden island is a great place to blow away the cobwebs, to walk or to watch the birds. Currently there is no ferry, but you can reach Marker Wadden with your own or a chartered boat.



ALMERE, THE NUMBER ONE CITY OF ARCHITECTURE

According to 'European New Towns'.

Remarkable modern architecture? Tick! Almere certainly offers that. Numerous renowned architects such as Rem Koolhaas, Herman Hertzberger and Liesbeth van der Pol showcase their design prowess here.

DELVE INTO FLEVOLAND'S RICH HISTORY



Since Flevoland was first reclaimed, an impressive 435 shipwrecks have turned up on the former seabed. One of these is the 'Ventjager' which went down around 1710; a true gem. You can take a much closer look when you visit Museum Batavialand.



MEET THE LOCAL

GINKIES TRIP URK

Great fun! 'Book' a real 'Urker' guide. An Urk local who will show you around for an hour and a half pointing out all the interesting and fascinating details of this remarkable fishing village!

A RIOT OF COLOUR IN THE TULIP FIELDS

Did you know that Flevoland is one of the Netherlands' largest open tulip fields? Driving across Flevoland in spring you will hardly believe your eyes: on the tulip fields you will be at sea on an ocean of vivid colour.



~ STAY

Special nights. Be inspired. Discovering Flevoland to the full takes time. Book a superb B&B or spend the night on a floating camping raft. Or perhaps you would prefer the luxury of a design hotel? All of course available! You'll always find a great location to spend the night here.



SLEEP HIGH IN THE TREES

Snooze like an owl, high in the trees. The world looks completely different from four metres up. You won't quickly forget a night spent up in the canopy.





SLEEPING ON AN UNINHABITED ISLAND

When you arrive at this uninhabited island you will have literally left life on the mainland behind you. Sleep like a native American Indian in a teepee or try a yurt or nomadic tent.



THE THOUSAND STARS HOTEL

Come and spend the night on a camping raft. What better than to drift off to the sounds of nature as background music.



Flevoland has ample space. Space for culture. Space for exploration
Space to enjoy. Space for festivals, astonishing site-specific theatre
and events.

#THEATRE SPECTACLE



Flevoland is endlessly innovative.

They enjoy nothing better than to make fresh and surprising use of all the opportunities this man-made land throws up. Improvising with the space has served up some astonishing site-specific theatre from a number of innovative groups



LOWLANDS

A Campingflight to Lowlands Paradise,
offers a wide range of different
entertainment. As well as music, the
event includes literature, film, cabaret,
ballet, theatre and stand-up comedy.
Don't miss it!



FLORIADE ALMERE 2022

From spring 2022, Almere will provide the green heart of the Floriade Almere 2022, the international exhibition and garden festival. For a period of six months, an area of the city centre will provide the focal point of the green city of the future.



URK IN WINTERSFEREN



The old village of Urk comes alive during this event, showcasing Urk in all its winter beauty. The inviting little streets and alleys are magically lit up, transporting you back to the times of constables, traditional clothing and travelling quacks. The scene is beautifully set with characters, stands and tableaus from the Urk of a century ago. Numerous squares also display traditional arts and crafts, peopled by pedlars, hawkers and other figures drawn straight from the history books.

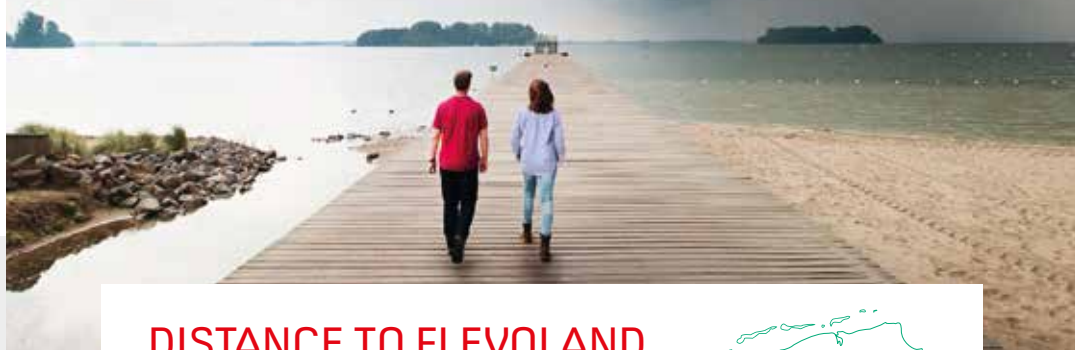


WILDEBURG

Wildeburg; the most idiosyncratic festival in the Netherlands. Three days of camping, enjoying music and creative madness.

An overview of all events in Flevoland is available at [visitflevoland.nl](https://www.visitflevoland.nl)

READY TO EXPLORE FLEVOLAND?
GO TO VISITFLEVOLAND.NL
AND BE INSPIRED!



DISTANCE TO FLEVOLAND

Binnen Nederland

Amsterdam 33 km

Schiphol Airport 44 km

Buiten Nederland

Cologne 248

Berlin 643 km

Antwerp 164 km

Brussels 206 km



VISIT FLEVOLAND

We always welcome the opportunity of providing you with the latest press releases concerning Flevoland. Please contact us if you would like to obtain information or photographs, videos, details of activities and/or programme suggestions for press trips.

You can reach us at the following: email: info@visitflevoland.nl
or by telephone on +31(0)320-286755.

VISIT _____
FLEVOLAND

COLOPHON **IMAGES** J. vd Linden (bottom image page 4), Batavialand (images page 9), Geert van der Wijk (Almere image page 11), Pluim fotografie (bottom image page 11), Fotostudio Wierd (top image page 14).
CONTENT Visit Flevoland **DESIGN & LAYOUT** ComSi.nl

VISIT
FLEVOLAND

HET RAVELIJN 50, 8233 BR LELYSTAD

VISITFLEVOLAND.NL

